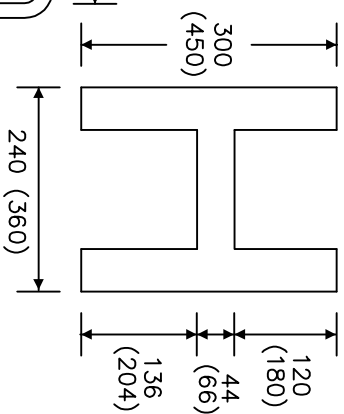


50  
(75)

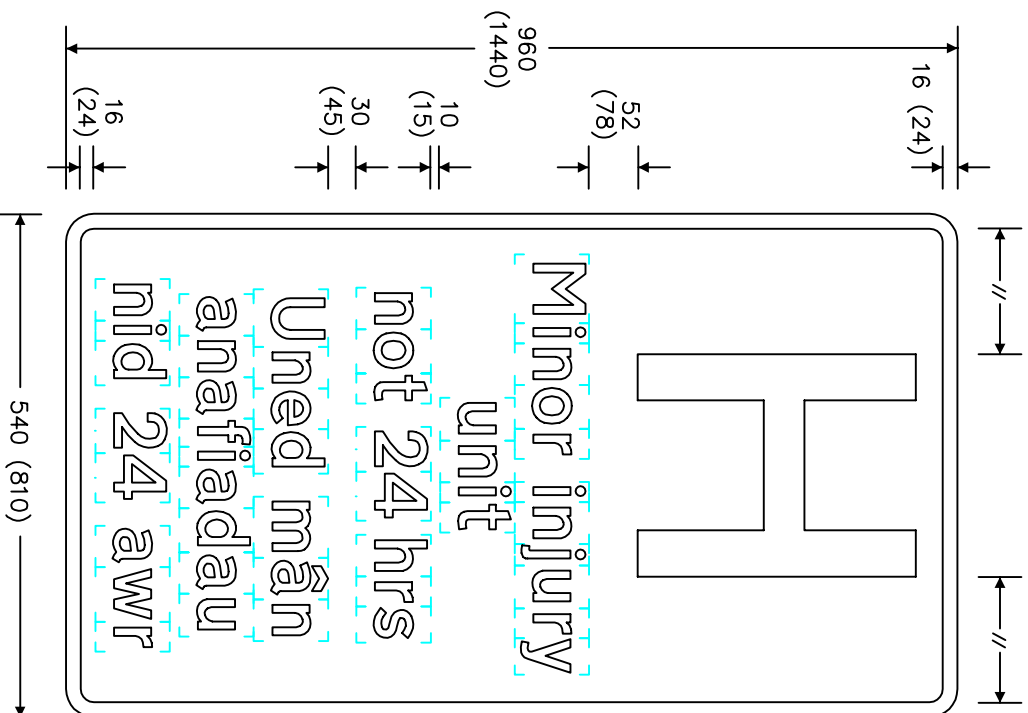


- Notes:-
1. The lettering is from the Transport Medium alphabet at the 'x'-heights shown.
  2. The outlines of the tiles do not form part of the sign.
  3. The colours are as follows:-  
Background \_\_\_\_\_ Red  
Legend, symbol \_\_\_\_\_ White  
and border \_\_\_\_\_
  4. The illumination of the sign must accord with the requirements of the current 'Traffic Signs Regulations and General Directions'.
  5. All dimensions are given in millimetres.
  6. The sign is designed in accordance with the current design rules.
  7. The order of languages may be reversed if required.

15  
(22.5)

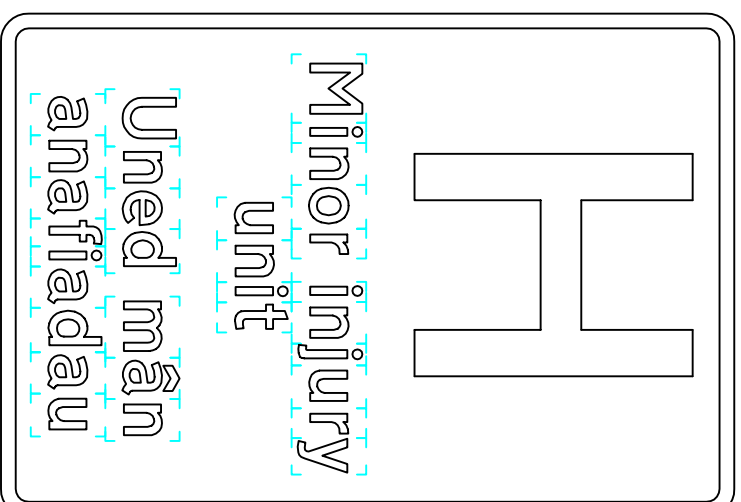
not 24 hrs  
nid 24 awr

25  
(37.5)



40 'x'-ht.  
(60)

16  
(24)



Variant

REVISIONS

1. Notes amended 6.3.07

Before using this drawing confirm with RNM3 Division that it has not been superseded.

Drn. A. I.1. Appd. Appl. date 27.8.03

Issue: 6.3.07

Scale: Photo-reduced

Title Informatory Sign

HOSPITAL

Minor injury unit

WELSH ASSEMBLY GOVERNMENT

Drwg. no. WAG/P 827.3