

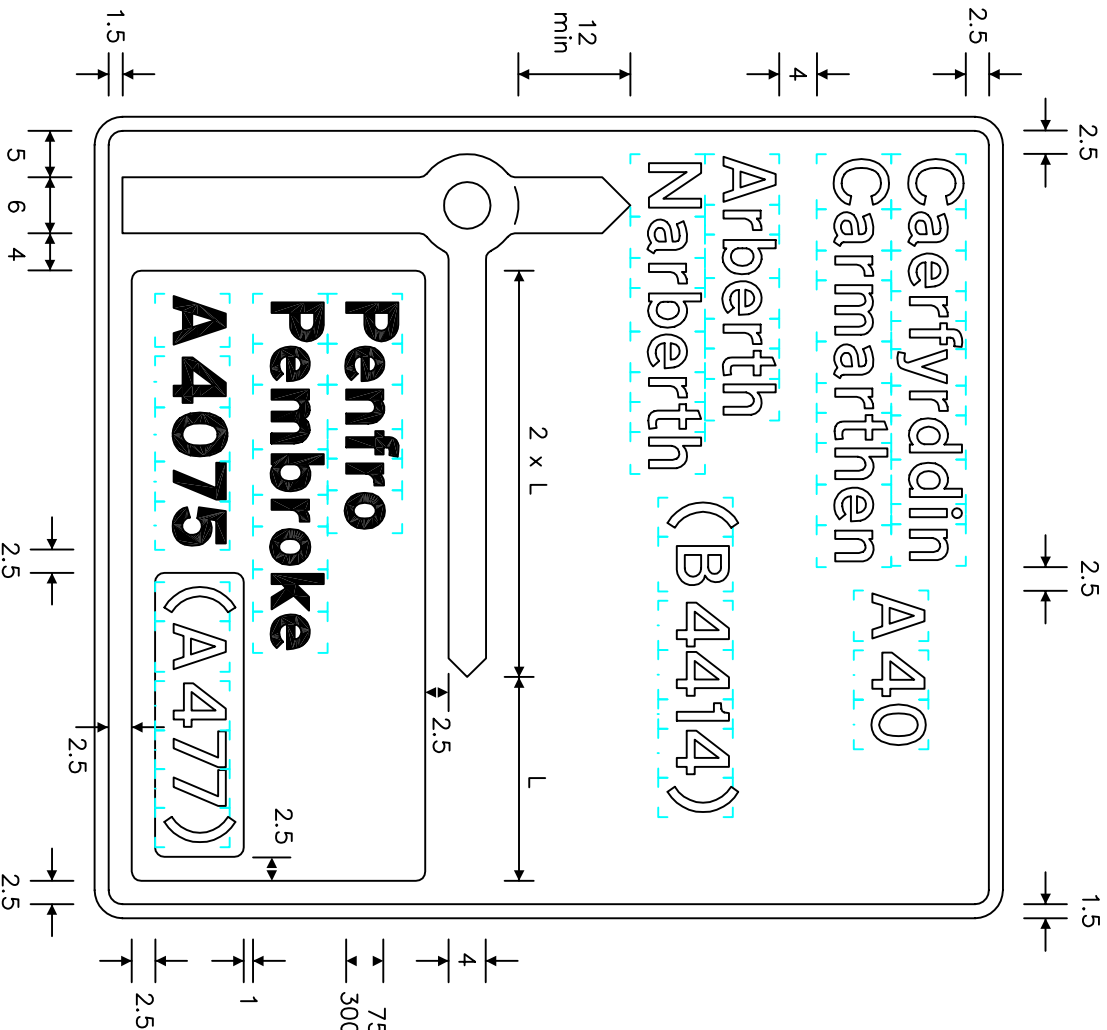
Notes:-

- The legends are from the Transport Heavy and Transport Medium alphabets at the 'x'-heights shown.
- The outlines of the tiles do not form part of the sign.
- The colours are as follows:-
Main Sign:-
Background _____ Green
Border & route symbol _____ White

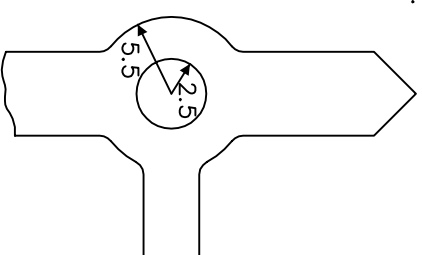
Legend _____ White (Transport Medium)
Route numbers _____ Yellow (Transport Medium)
Non-primary route panel:-
Legend _____ Black (Transport Heavy)
Background _____ White

Primary route patch:-
Route number _____ Yellow (Transport Medium)
Background _____ Green

- The illumination of the sign must accord with the requirements of the current 'Traffic Signs Regulations and General Directions'.
- The 'x'-heights shown are given in millimetres, all other dimensions are given in stroke widths (i.e. $1s/w = 1/4 \times \text{'x'-height}$).
- The sign is designed in accordance with the current design rules.
- The order of languages may be reversed if required.



75 min 'x'-ht.
300 max



REVISIONS

1.	Redrawn & notes amended	15.8.00
2.	Redrawn & notes amended	30.4.04
3.	Notes amended	25.4.07

Before using this drawing confirm with RNMS Division that it has not been superseded.

Dn. A.T.I. Appd.

Chkd. Appl. date 27.3.97

Issue: 25.4.07

Scale: Photo-reduced

Title Primary Route Directional Sign
MINI-ROUNDABOUT WITH EXITS TO A
PRIMARY ROUTE, LEADING TO A NON-
PRIMARY ROUTE, AND A NON-PRIMARY
ROUTE, LEADING TO ANOTHER PRIMARY ROUTE
TO ANOTHER PRIMARY ROUTE

WELSH ASSEMBLY GOVERNMENT

Drwg. no.

WAG/P 2024